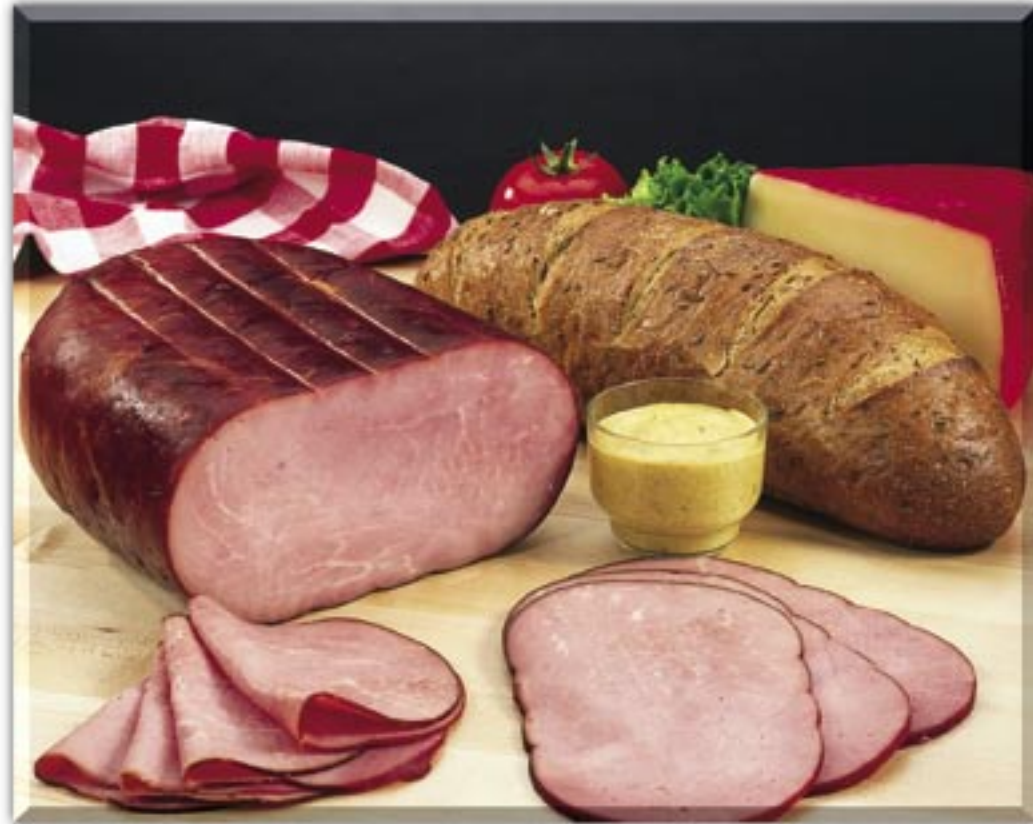


### **Buffet Ham**

The buffet is a boneless, tender ham. The versatility of this ham seems to have no limit—cubed, diced, or julienne for various salad and soup applications, sliced for sandwiches.

Weight (Whole Ham): 10 lbs  
Weight (Half Ham): 5 lbs



### **Sliced Ham**

Sliced hams are available in several different package configurations; sliced ham for sandwiches, boneless ham steaks for breakfast or dinner.

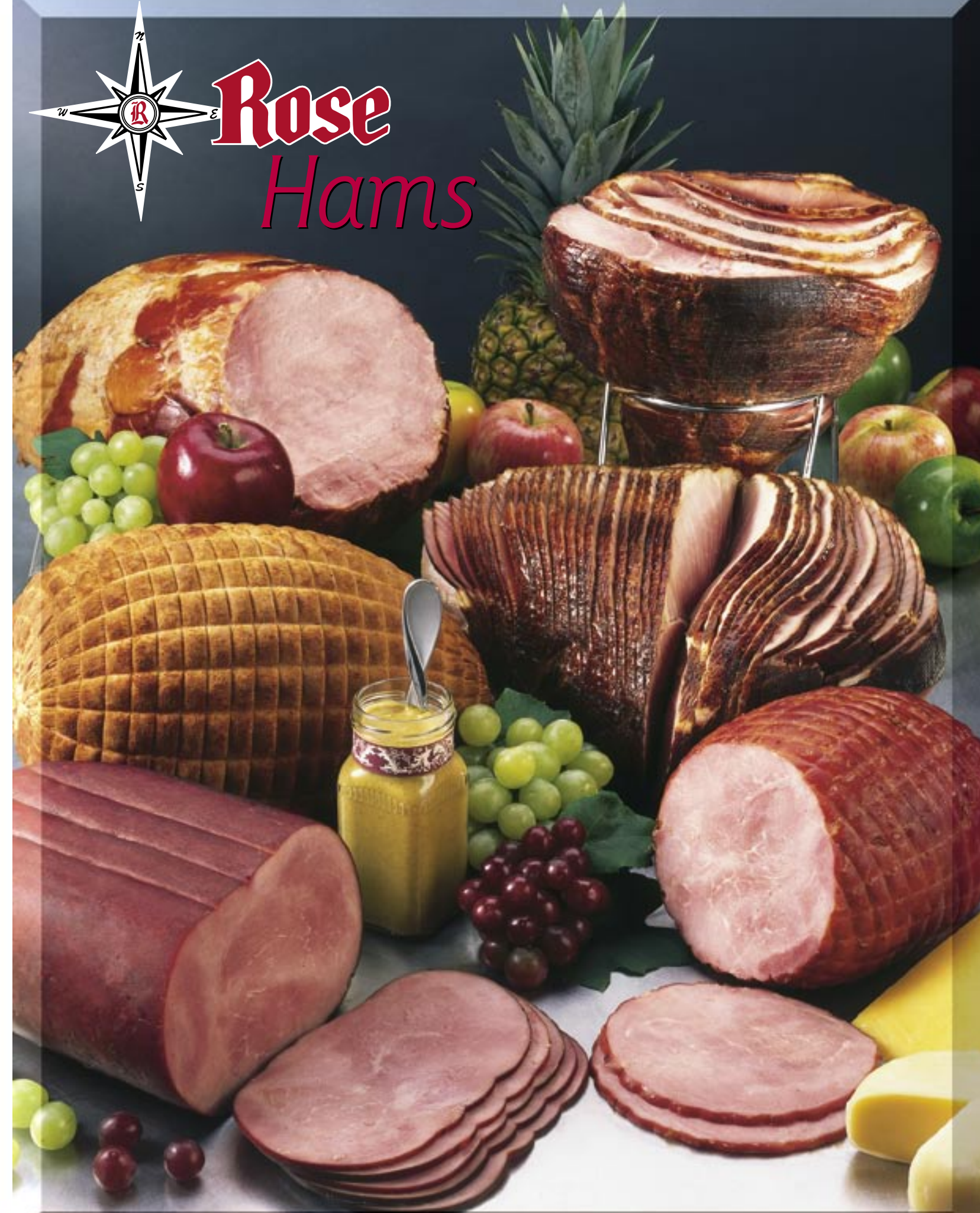


## **Rose Packing Company**

65 South Barrington Road, Barrington, IL 60010  
Phone 847-381-5700 • 800-323-7363 • Fax 847-381-9424  
[www.rosepacking.com](http://www.rosepacking.com)



# **Rose Hams**



**Rose** has a variety of hams to fit your culinary needs. Rose hams include: spiral sliced ham, pit ham, Bavarian ham, buffet ham—light or dark, bone-in ham and pre-packaged sliced ham.



### **Bone-In Ham**

Rose slowly smokes bone-in hams with real hardwood chips ensuring a smoky flavor.

Weight range: 15-19 lbs,  
19-22 lbs,  
and 22 lbs & up

Available in: 1 pc, 2 pc and  
3 pc boxes

### **Spiral Sliced Bone-In Ham**

Rose's spiral sliced ham is richly smoked, fully cooked and pre-sliced.

All hams come with a glaze pack. Foil wrap, netting, and ham stand available upon request. Available in traditional or honey cure.

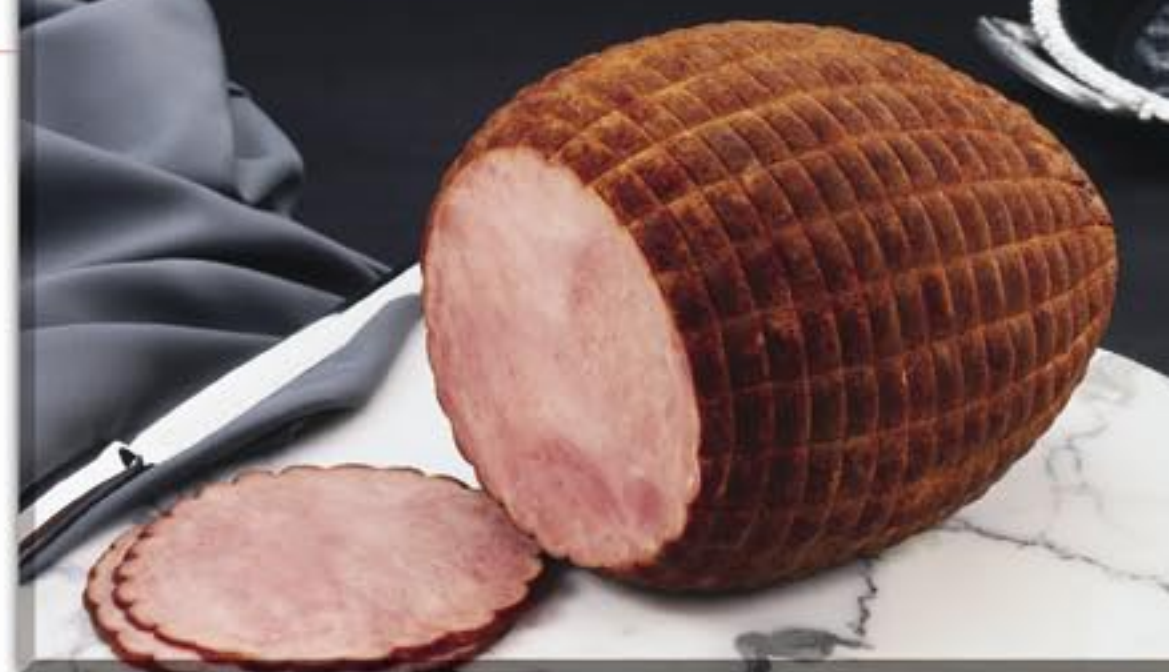
Weight range (Whole Ham): 10-16 lbs  
Available in: 1 pc and 3 pc boxes

Weight range (Half Ham): 5-8 lbs  
Available in: 1 pc, 2 pc and 4 pc boxes

### **Pit Ham**

This ham contains no knuckle or shank meat, the internal star fat is removed. It is a lean tender boneless ham.

Weight range: 10-12 lbs  
Available in: 2 pc box



### **Bavarian Ham**

Rose Bavarian hams are boneless, vacuum packed, and are fully cooked. Select our traditional or black forest style.

Several weight ranges and box sizes are available.

### **Tavern Ham**

The tavern ham is a fully cooked, hickory smoked, boneless ham.

Weight range: 14-17 lbs  
Available in: 4 pc box

